

IMPORTANT DATES

- ♦ **Year 6 Excursion**
Mon Nov 13 - Thur 16
- ♦ **Thursday Nov 16**
Kinder Orientation
- ♦ **Wednesday Nov 22**
Sesquicentenary
Community Meeting
5pm
- ♦ **Thursday Nov 23**
School Leadership
speeches 9:15am &
School Disco 6-8pm
- ♦ **Mon Nov 27 - Dec 8**
Swim Scheme
- ♦ **Friday Dec 1**
School Presentation
Assembly 9:30am &
Woombah Christmas
Carols 6pm
- ♦ **Wednesday Dec 6**
Get Hooked on Fishing
- ♦ **Thursday Dec 7**
Year 6 Lunch

Important

Year 6 Excursion
Mon 13 –Thurs 16

K-4 Swim Scheme
begins Nov 27.

NEXT P & C MEETING
DECEMBER 5 @ 6:15

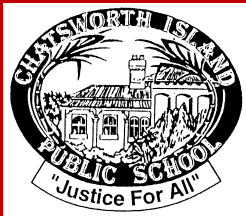
Canteen Roster

Fri: Ellie & Tennille S

WEBSITE

Chatsworth Island School
Website.
School Newsletters can be viewed
in colour.

www.chatsworth-p.schools.nsw.edu.au



November 7 2017

Chatsworth Island Public School

136 Chatsworth Island Road
CHATSWORTH ISLAND NSW 2469

Phone: 02-66464346

Facsimile: 02-66464160

Email: chatsworth-p.school@det.nsw.edu.au

Greg Speirs-Principal

WELCOME TO WEEK 5

CONGRATULATIONS TO LAST WEEK'S MERIT AWARD WINNERS:

Chatty Champion Award: Joseph Young

Awesome Awards: Angus Ogilvie, Georgina Smith, Rhea Shannon, Ivy Bogg-Sellers, Jack Hayes, Sumira Mahoney, AJ Black, Lane Dale, Oscar Bogg-Sellers, Alivia James,

150 night reading award: Ruby James

ARANYANI ADVENTURE PARK EXCURSION: Last Tuesday we went to Aranyani Bison Farm near Casino. Once we arrived we ate recess in the camp kitchen. We were then split into three groups; Group A, Group B and Group C. Our instructors were Kelsey, Mark, and Lisa. We fed bison, donkeys, guinea pigs, and chooks. We saw beautiful birds with bright colours. We rode the zip line and had a look at the museum. Lisa had put together a skeleton of a bison. It was massive.

During the feeding presentation we had to sit quietly so we didn't frighten the bison. When scared they run really fast! There was a huge alpha male and a pregnant bison due to give birth soon. A baby calf had been born the day before and it was with its mother in another paddock.

The park had four big tepees that you can stay in. There's a special gutter that catches the rain from the hole in the top. Possums like to use that gutter too! We had the chance to touch rose, smokey, clear and normal quartz. They were big pieces of crystal in a circle around the camp fire area.

On the bus trip home, some of us went to sleep. Isla, Theo, Ruby, Tess and Liz went to sleep. We had a great time and want to go back and sleep in the tepees. By Ivy, Tess, Monique, River, Banjo, Isla and Theo.

CANTEEN ORDER FORM PLEASE RETURN ON WEDNESDAY

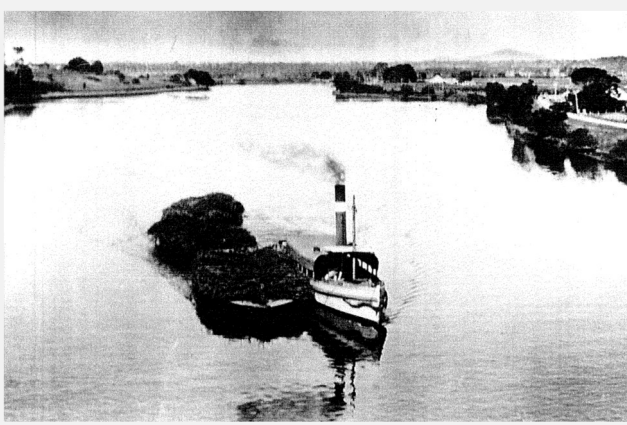
Burgers	Name	Name	Name
Select your ingredients with a tick in the column below your name.			
Beef Pattie			
Veggie Patty			
Lettuce			
Tomato			
Beetroot			
Cheese			
Tomato Sauce			
BBQ Sauce			

DID YOU KNOW?

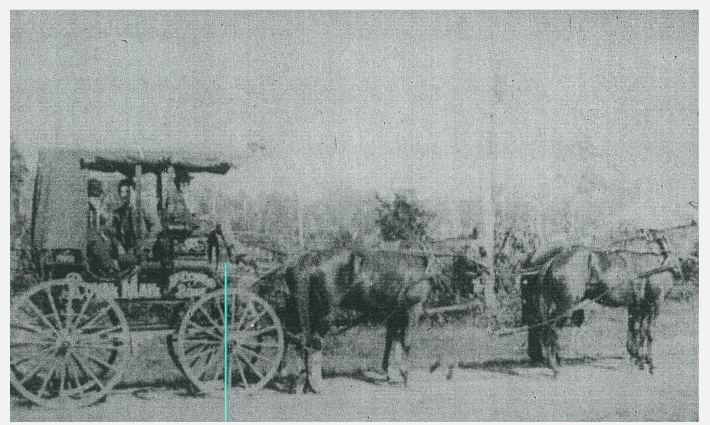
Chatsworth Island was named after the Chatsworth Estate in Derbyshire England. The earliest settlers arrived at Chatsworth Island in the 1850's and straight away began clearing land for crops and building houses. It was a tough life back then!

In the early years there were 5 hotels, 3 general stores, 2 butcher shops, barber shop, fruit shop, a boarding house, 6 churches, bank, police station, blacksmith, swimming baths and of course a school house! The first 3 stores at Chatsworth were the Post Office, a commercial store and a floating store moored to the riverbank. The Post Master, Mr Albert Gale was also the first teacher at the school in 1868.

Chatsworth Island was a very busy place in the early 1900's. The main sugar mill was built at Chatsworth and did not move to Harwood until around 1910. Chatsworth Island was an overnight rest stop for people travelling to Grafton or heading north. The only transport was by river steamer if you were heading south or horse drawn coach for other locations. There were no roads in those days. There were also ferry services which crossed the Clarence River at Harwood, Chatsworth to Warregah Island and from Chatsworth to Goodwood Island. The main highway was built and travelled through Chatsworth Island up until 1984 when the village was bypassed with the new Pacific Highway. It is hard to imagine Chatty back in those days compared to the quiet village it is today!
(researched by previous Year 6 students)



Chatsworth Cane Barge



Chatsworth - Woodburn Coach

2018 SESQUICENTENARY COMMUNITY MEETING: Our school will officially turn 150 years old next year. This is a massive occasion for the school and community and a great opportunity to showcase our wonderful little school to the residents and visitors of the Clarence Valley.

We will be holding a community meeting in the school grounds on Wednesday November 22nd at 5:00pm. The purpose of this meeting is to bring everyone together to form a committee to organise and oversee the celebrations. I encourage all community members, parents, students and teachers (past and present) to come along to the meeting. This is not a P & C or school coordinated meeting, it is all about coming together and working together to gauge the interest and ideas for the sesquicentenary. There is already plenty of interest from past students, teachers and community members.

YEAR 5/6 BRISBANE EXCURSION: The date has finally arrived and I will be away next week with Year 5 & 6 touring the sights and educational experiences of Brisbane and the Gold Coast. We will be visiting the Maritime Museum, Science Centre, Parliament House, Australia Zoo, Movie World, and many other attractions. Year 5 & 6 have been fundraising all year and are looking forward to a wonderful week with hopefully, lots of early nights!

RAFFLE WINNER: Congratulations to Morwenna Hogan on winning the giant Toblerone chocolate bar which was drawn at last Friday's assembly. Dad is very pleased!

REMEMBRANCE DAY: We will be holding a small Remembrance Day Service on Friday at 11:00am. Parents and community members are invited to attend.

2018 KINDER ORIENTATION: Next Thursday November 16 we will be holding our final orientation visit for students starting Kinder in 2018. All the kids have been enjoying a wonderful time each fortnight with Mrs Adey and her K/1 students. If you know of any families with a child who maybe starting school next year please let them know to contact the school. A lot of families may not realise that the village of Woombah is one of the official zoned areas for our school.



2018 SCHOOL LEADERSHIP SPEECHES: Candidates for the roles of School Leaders for 2018 will present their speeches to the school on Thursday November 23rd at 9:15 am in the school library. Parents are invited to attend.

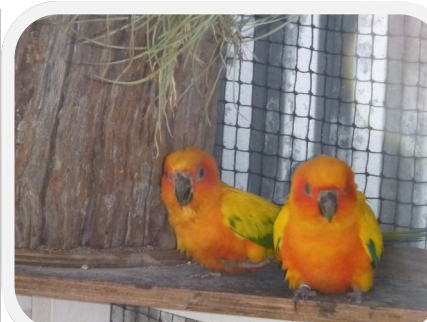
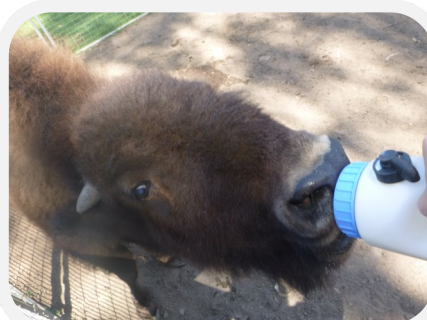
YAMBA MARKETS SCHOOL CHOIR: Our choir master Mr Ryan Enns will be leading a gigantic choir performance for all the schools on Sunday November 26. Ryan would like to see as many students as possible perform on the day. More information will be included in upcoming newsletters.

UPCOMING EVENTS: Don't forget to check your calendars and the newsletter for upcoming events and activities each week. It is beginning to look quite busy over the next 3-4 weeks.

Enjoy your week
GREG SPEIRS
PRINCIPAL

ARANYANI ADVENTURE PARK EXCURSION





CANTEEN: This Friday we will be open for recess and lunch. On the menu are Beef or Vegetable hamburgers for \$5. If your child would rather have their lunch as a salad bowl please just write a note on your order. All orders must be returned tomorrow (payment can be made on Friday if needed).

Thank you to Katie, Lucy and Sally for all your hard work in the canteen last week.

We welcome any new volunteers, please fill in the volunteer form and return it to the front office if you are able to spare any time on Fridays to help out.

WEEK ENDING	VOLUNTEERS
Friday November 10	Elle and Tennille S
Friday November 17	Kylie & Help Needed
Friday November 24	Sahnti & Help Needed
Friday December 1	
Friday December 8	
Friday December 15	